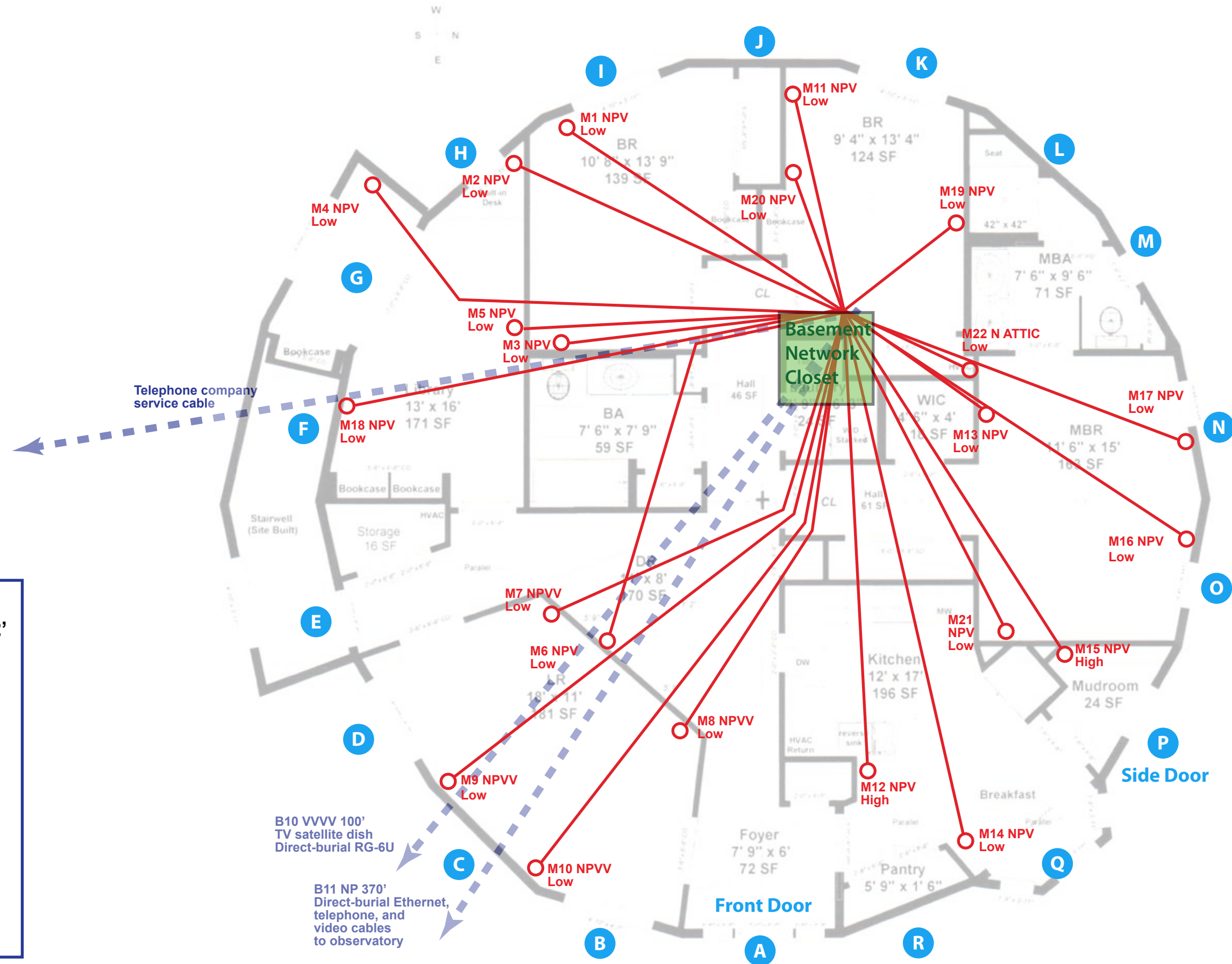


Kurylo/Dodd House Connectivity Plan

October 14, 2010

Main Floor



Legend

Floor Designation

CM = Main
CB = Basement

Circuit Number

Cables

N = Network
P = Phone
V or VV= Video (1 or 2 RG-6U coax cables)

Approximate Horizontal Cable Run

Scale: 1" = 6.154'

FOR TOTAL CABLE LENGTH:

Main floor: horizontal run + 8' (low) or 11' (high) vertical (down to equipment closet)

Basement: horizontal run + 14' (low) or 11' (high) vertical (up to ceiling, down to equipment closet)

"High" or "Low" beneath circuit designation indicates height above floor. Low is normal electrical receptacle box height, high is approximately 45".

CM4 NPV 32'